



## ZL2VH Newsletter – September 2021

### President's Report

Hopefully by the time you are reading this we are in level 3 and heading down towards level 2. The clubrooms will remain closed until we are back in level 2.

Now that our newsletters are produced every three months hopefully we should have more content for them, Eric is always on the hunt for interesting items that would be of use for our members.

The AREC visit planned for Friday 3 September will have to be delayed until further notice once we are back to level 2.

Simon will have some updates on what is happening with the repeater site and our beacons.

There is a lockdown net on 147.00 daily at 10 a.m. that seems to get around 10-12 amateurs joining in.

Don't forget to check the NZART website [www.nzart.org.nz](http://www.nzart.org.nz) or the Facebook page <https://www.facebook.com/theNZART/> for information from NZART HQ.

The club has its own website at [www.zl2vh.org.nz](http://www.zl2vh.org.nz) and Facebook at <https://www.facebook.com/groups/1606806442913475/>

For those interested in our D-Star systems the dashboards are available at <http://123.255.47.67/> for ZL2VH C 5425 and at <http://zl2vh-b.ddns.net:82/> for ZL2VH B 860

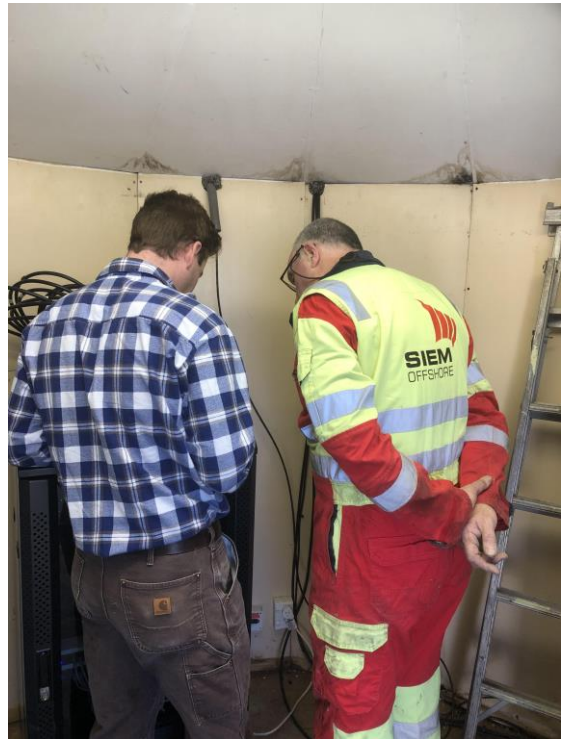
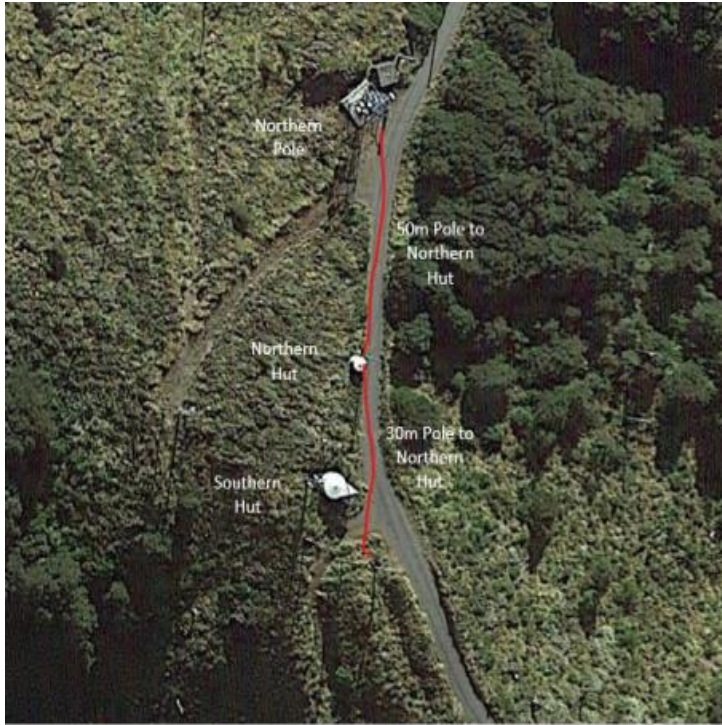
Coming up in October is our main fundraising event for the year, The Wainui Coast Road TimeTrials, I expect to be asked for the caravan and 8 marshals as well as the STSP repeater. It's fun and can be character building... Date to be advised.

Mike ZL2NSA  
Br63 President.

## **Branch 63 Repeater Update**

In July John ZL2TWS, Murray ZL2IQ and Fraser ZL4VV completed some maintenance work at MCL.

- 1) Deviation checked using HP clubrooms meter and adjusted to match input.
- 2) 395 Feeder coax cable LDF-450 returned to service.
- 3) New RG-213 cable, Ex 395 now available for SDR antenna. (See Murray ZL2IQ for details)
- 4) 1.7L of water pumped out from blue conduit at north hut end. Fraser can attest that the water does not taste very nice !.
- 5) Leak ingress of water located and temporary fix attempted. (Discuss with Fraser ZL4VV for more details)
- 6) SDR Antenna length measurements between poles and huts measured and photographed by ZL2IQ.



## Climie KiwiDR Project Update

After surveying the SDR options the club purchased a KiwiSDR. For the past couple of weeks it's been on test at ZL2BRG's qth and has been performing well.

A suitable location at Climie was surveyed for a long wire antenna and a balun is being fabricated to suit. Installation at Climie will be in a month or so when all preparations (and lockdown levels) are complete.

The KiwiSDR test setup can be accessed via <http://123.255.47.67:8073>.

## Status Updates

**10m Beacon**                      On Air

The Club's 10m Beacon ZL2MHF 28.229Mhz was approved and is now on air. Reception reports appreciated. !

**3cm Beacon**                      Off Air - Pending repair

Before lockdown the 3cm beacon's head unit was removed to find the cause of the low power output. The cause was water condensation pooling at the coax to wave-guide transition. This caused the SWR to rise, damaging the final PA transistor.

The waveguide feed has been modified to allow any condensed water to drain safely away. The PA has been repaired and an Isolator will be fitted in series with the feed to protect the PA transistor from any further expensive mishaps. Work is almost complete and will be ready to go back on air in a couple of weeks. (Level 2 permitting).

It's interesting that there's been a number of calls regarding ZL2VHX's status. particularly from Christchurch.

**1292 23cm**                      On Air

**DSTAR 5425,860**              On Air

A decision was made to purchase another ICOM RP2C controller from Mark ZL2UFI. During one of the next site visits this controller will be used to decouple the 860 and 5425 repeaters, Allowing IRCDDDB to be run on 860.

**730**                                      On Air

**395 6M**                                On Air

## **From Gavin ZL2ACT**

Today (1st September) we were advised that our term deposit interest of \$826.13 will be paid into our savings account on the 2nd.

Also, the Wellington Cross Country Vehicle Club made a very generous donation to help us maintain Climie 730. Of course, I was expecting the interest payment, but with the addition of the CCVC donation, the Branch position is comfortable.

Nothing more from me. Maybe a regret that the expected visit from John Murphy cannot go ahead. Thank you Covid.

Regards  
Gavin

**We are always looking for articles to fill the pages of newsletter. Please forward anything, no matter how large or small, to the editor - Eric ZL2SET – [ericwilby@gmail.com](mailto:ericwilby@gmail.com).**